

GB Property Management and Lettings



REF 2797

A freshly decorated throughout, detached 2/3
Bedroomed bungalow, benefiting from large
bedrooms, new central heating and driveway
parking.

£1400.00PCM

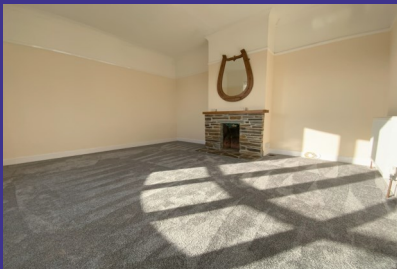
**21 Abbotsfield
Crescent, Tavistock,
Devon, PL19 8EY**

- Detached Bungalow
- 3 Double bedrooms
- New central heating
- Garage

Property Description



- Kitchen/ dining room with built in pantry, Lounge with decorative fire place
- 3 Double bedroom, 2 with built in wardrobes
- Shower room with heated towel rail
- Main cloakroom
- 2nd Cloakroom/ utility room
- Gas central heating
- Double glazing
- Garden with green house
- Garage and storage room to rear
- Crazy paving to the front
- Driveway parking



Available now for 6 months ongoing at £1400.00pcm + £1615.00 Damage Deposit

Metered Water & Council Tax band 'C' £2,178.85

Landlords Restrictions- No Smokers

Pet at landlords discretion

The Energy Performance of this property is Rated C, Rating 69

To secure this property 1 weeks Holding Deposit of £320.00 will be required

INFORMATION IS PROVIDED AS A GUIDE ONLY AND SHOULD NOT BE CONSIDERED AS A STATEMENT OF FACT, REPRESENTATION OR WARRANTY

GB Property Management and Lettings

office 01822 615951

lettings@gbpropertylettings.co.uk

www.gbpropertylettings.co.uk

Partners- Glenda R. Bassett & Nancy M. Williams

16A Plymouth Road , Tavistock, Devon, PL19 8AY

